

DN32

Item	Qty	Part Number	Description	Material	Treatment
1	1	110524	PIPE-DN32 TWIST-INOX	TAQ-TWIST-DN32-32X40-8X0.30mm	-
2	2	12349	SLEEVE-DN32	Stainless Steel AISI 304	-
3	1	12351	RM-G1 1/4" 6A-GRAF-L36-DN32	Polypropylene (>PP<)	-
4	1	12350	NIPPLE-1 1/4" 6A-GRAF-L36-DN32	Brass CW617N	-
5	1	11447	NUT-G1 1/4"-H20-SW44	Brass CW614N	Blasting
6	1	12964	WASHER-1 1/4" AFM 34	FIBER	-
7	1	23134	LABEL TWIST-DN32/DN40	Polypropylene (>PP<)	-
8	1	23226	HANGER-1-1/4	Polypropylene (>PP<)	-
9	1	23271	CAP MALE-G 1 1/4"	Polyethylene (>PE<)	-

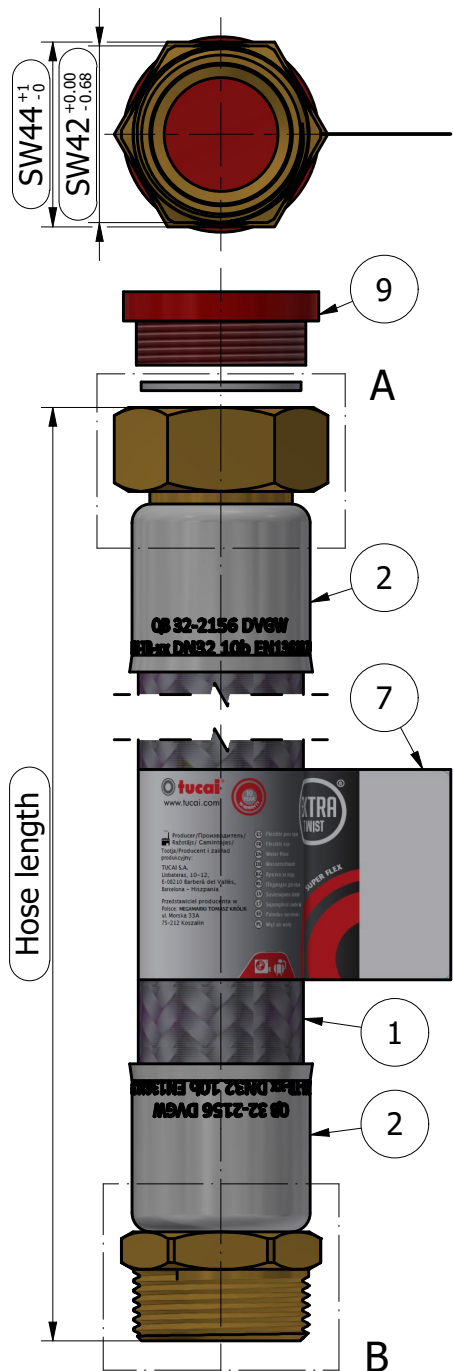
d

General Notes:

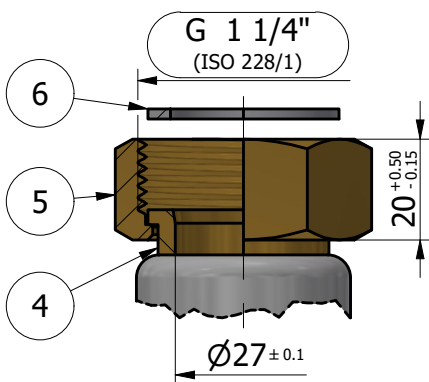
- All dimensions are in mm.
- Hose length not to scale.
- Product marking according to Tucai Engineering Standard ET-050.
- Width across flat surfaces according to DIN 475-1.
- Dimensional and geometrical tolerances according to ISO 2768-mK.
- Surface texture according to ISO 1302.
- To comply with the Standard EN-13618:2016.

Part Number	Description	Hose length
204761	EXTRA-TWIST MG-1 1/4"-300	305 +/-5
204762	EXTRA-TWIST MG-1 1/4"-350	355 +/-5
204763	EXTRA-TWIST MG-1 1/4"-400	405 +/-5
204764	EXTRA-TWIST MG-1 1/4"-450	460 +/-10
204765	EXTRA-TWIST MG-1 1/4"-500	510 +/-10
204766	EXTRA-TWIST MG-1 1/4"-600	610 +/-10
204767	EXTRA-TWIST MG-1 1/4"-700	710 +/-10
204768	EXTRA-TWIST MG-1 1/4"-750	760 +/-10
204769	EXTRA-TWIST MG-1 1/4"-800	810 +/-10
204770	EXTRA-TWIST MG-1 1/4"-1000	1010 +/-10

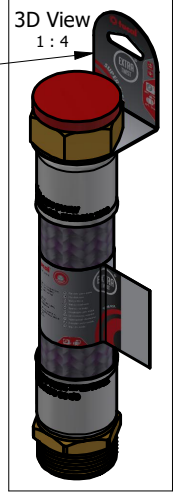
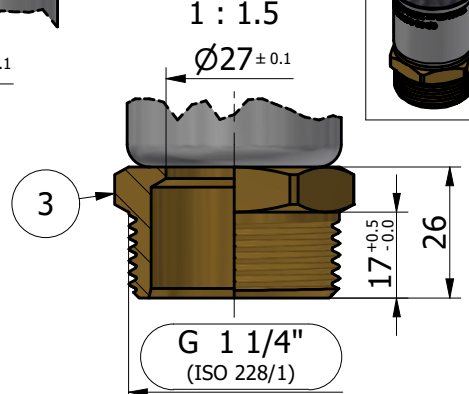
MACHINING TOLERANCE (ISO-2768-m) LINEAR DIMENSIONS	over 6 up to 30	±0.2
	over 30 up to 120	±0.3
NO SHARP EDGES PERMITTED	up to 10	±1°
	over 10 up to 50	±0° 30'
ANGULAR TOLERANCE FOR LENGTH RANGE (SHORTER SIDE OF ANGLE)	over 50 up to 120	±0° 20'
	over 120 up to 400	±0° 10'
UNSPECIFIED RADIUS	0.5 up to 6 mm	±0.1
	over 6 up to 120	±0.5
INSPECTION DIMENSION	Width across flat surfaces according to DIN 475-1	
	BRASS MATERIAL SHALL BE STRESS RELIEVED	



Detail A
1 : 1.2



Detail B
1 : 1.5



d	30/11/2023	Replace ref. 21916 by ref. 23134. Update drawing design.	8904	GRG	DDO
c	14/01/2019	Hanger 23226 & cap 23271 added		ICQ	OAG
b	21/03/2016	Updated label and sleeve marking. Added fiber washer		DGN	OAG
REV	DATE	DESCRIPTION	PET	DESIGNER	CHECKED BY
DESIGNER	DGN	02/11/2015	<h1>HOSE ASSEMBLY</h1>		
APPROVED BY	OAG	02/11/2015			
EXTRA-TWIST MG-1 1/4"				Code 204761-T	